

MESA Study

NEJM Mar 27, 2008

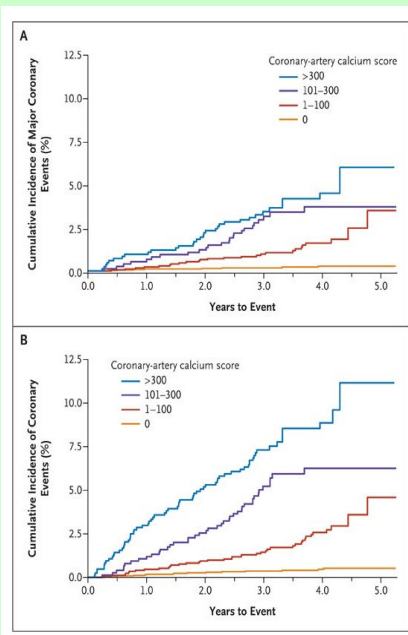
6,722 persons

39% white

27% black

22% Hispanic

12% Chinese



Coronary Calcium as a Predictor of Coronary Events in Four Racial or Ethnic Groups (MESA Study) (6722 Subjects)

NEJM Mar 27, 2008

■ CONCLUSIONS

- The coronary calcium score is a strong predictor of incident coronary heart disease and provides predictive information beyond that provided by standard risk factors in four major racial and ethnic groups in the US. No major differences among racial and ethnic groups in the predictive value of calcium scores were detected.